

# The Kyushu Geibunkan is a center for art & cultural interactions that works hand-in-hand with the local community.

The facility's goal is to provide visitors with a joyful sensation by emanating the local community's rich history and culture. To achieve this goal, we endeavor to rediscover the appeal of the local community's artistic culture, history, and nature. We are also dedicated to exploring systems of values unique to Asia and other regions around the world. Through such efforts, we work hand-in-hand with the local community to be a "hub for artistic cultural interaction" that is vibrant and discovers new, creative ideas. The three pillars of "artistic culture", "experiences", and "interaction" drive projects at the Kyushu Geibunkan.



Main Building



Geibunkan Annex.01



Geibunkan Annex.02



## Days Closed

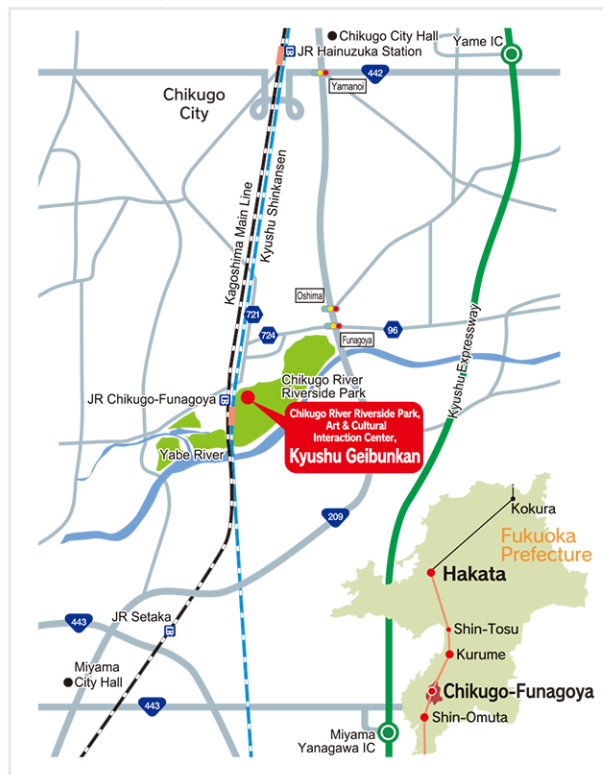
Closed during the New Year Holidays (December 29th-January 3rd) and Mondays. (If Monday is a National Holiday, the museum will close on the next day that is not a National Holiday.)

## Opening Hours

Main Building, Annex 1, & Annex 2 9:00AM ~ 9:00PM

Parking Lot 8:30AM ~ 9:30PM

## Access Map



**Location** 1131 Tsushima, Chikugo-shi, Fukuoka 833-0015

**Access**

- [ By JR ]
  - Kyushu Shinkansen Chikugo-Funagoya Station (1 min walk)
  - JR Kagoshima Line Chikugo-Funagoya Station (1 min walk)
- [ By Bus ]
  - Nishitesu Bus Chikugo-Funagoya Bus Stop (1 min walk)
  - Bus No. 50 (Bound for Funagoya, Hainuzuka Station, Koradai & Kurume)
- [ By Expressway ]
  - Kyushu Expressway
  - Exit Yame IC (10 min drive) ○ Exit Miyama Yanagawa (15 min drive)

**Contact** Kyushu Geibunkan [ TEL ] 0942-52-6435 [ FAX ] 0942-52-6470 [ Homepage ] <http://www.kyushu-geibun.jp>

Thus far, and into the future.  
Through every interaction,  
the art culture of Kyushu  
begins a new journey.



九州芸文館

KYUSHU GEIBUN-KAN





## Main building

Blending in with its surrounding environment, the Main Space reflects the museum's concept.

This facility is intended to awaken the creative spirit within the region's people by providing various hands-on experiences across many genres including art, traditional crafts, history, and nature. There are also multiple rooms ready to be used as exhibition rooms for full-scale art exhibits.

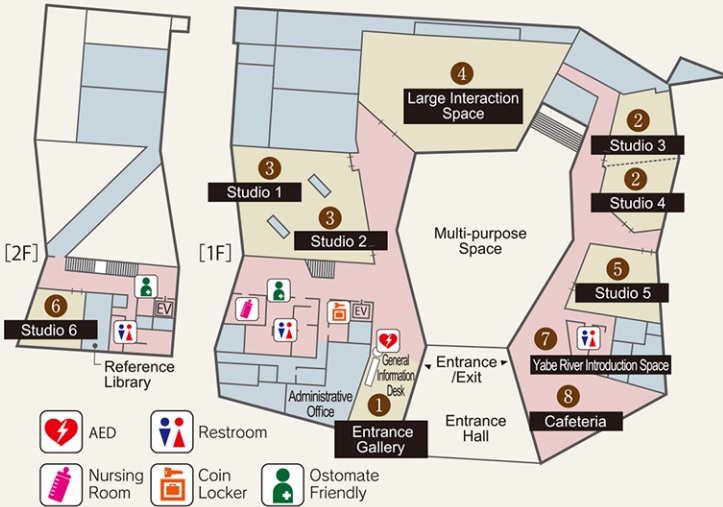
## Facility Overview

Opened in April 2013

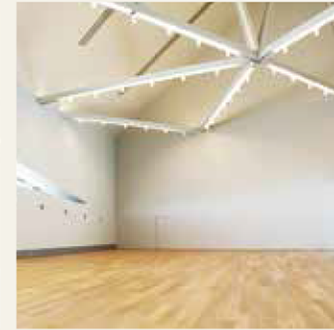
Main Building : Floor Area 3657㎡, RC Construction/Partial Steel Construction, Two Stories Above Ground  
Annex 1 : Floor Area 334㎡, RC Construction, One-story Building  
Annex 2 : Floor Area 163㎡, Wooden Construction, One-story Building

Building	Facility Name	Main Purpose
Main Building	Large Interaction Space (300people, 444㎡)	Lectures, concerts, exhibits
	Studio 1 (40 people, 117㎡)	Workshops, art exhibits
	Studio 2 (44 people, 117㎡)	Workshops, art exhibits
	Studio 3 (40 people, 86㎡)	Lectures
	Studio 4 (40 people, 81㎡)	Lectures
	Studio 5 (40 people, 126㎡)	Cooking classes
	Studio 6 (30 people, 70㎡)	Lectures
	Entrance Gallery	Informational exhibits, art exhibits
	Yabe River Introduction Space	Permanent exhibits regarding the Yabe River basin
	Cafeteria	Café & Restaurant
Annex 1	Studio A (40 people, 173㎡)	Workshops, art exhibits
	Studio B (20 people, 173㎡)	Workshops, art exhibits
Annex 2	Studio C (40 people, 96㎡)	Pottery classes, crafting
	Workroom	Electric kiln, storage

Paid Parking Lot : 103 cars



3 Studio 1 & 2  
Move the walls dividing the two rooms and wander around the unified space.



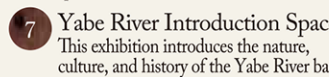
4 Large Interaction Space  
The Large Interaction Space is the museum's largest multi-purpose space.



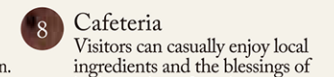
5 Studio 5  
Infused with the scent of wood, the floors and cooking counters in this learning space are made of Yame Cedar.



6 Studio 6  
This studio is a comforting learning space where one can experience the culture of wood.



7 Yabe River Introduction Space  
This exhibition introduces the nature, culture, and history of the Yabe River basin.



8 Cafeteria  
Visitors can casually enjoy local ingredients and the blessings of barley at the café-style restaurant.



1 Entrance Gallery  
The Entrance Gallery is a bright, open space located next to the main entrance.



2 Studio 3 & 4  
Connect the two rooms by opening the movable partition.

## Personalities Spring to Life in this Studio Space

### Geibunkan Annex.01



Studio A & B  
Equipped with exhibit panels, these studios can be used for galleries and for various workshop activities and classes.

### Geibunkan Annex.02



Studio C  
The organic studio is made from local Yame cedar. Equipped with electric pottery wheels and kilns, the studio is ideal for pottery classes.

## Art Project Exhibits Promoting the Museum's Appeal

The facility's appeal of "Connecting the World through Art" is displayed through the various works of art that embody the "interactions" theme.

### Art Wall



Left : Horyuji Temple Golden Hall, Wall Paintings No. 5, 6, & 7 Art Wall I  
Middle : "Blue Dragon"—Complex of Koguryo Tombs, Kangso Great Tomb & Four Guardian Deities Art Wall II  
Right : Dunghang Mogao Caves, Cave 57, South Wall, Illustration of Preaching Art wall III

### Art Park



Title : Stone Horse  
Material : White Granite



Title : 1, 2, 3 = 1  
Material : Aluminum